



BIM implementation in French SMEs : an example

ast:rées

1

General trends about BIM and skills

BIM : a necessity but not a widespread reality

Identified impacts on design works

Identified impacts on management of building site

2

BuildAll : a company case

An
independent
company



A general
building
company

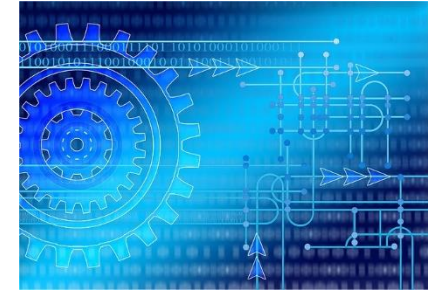
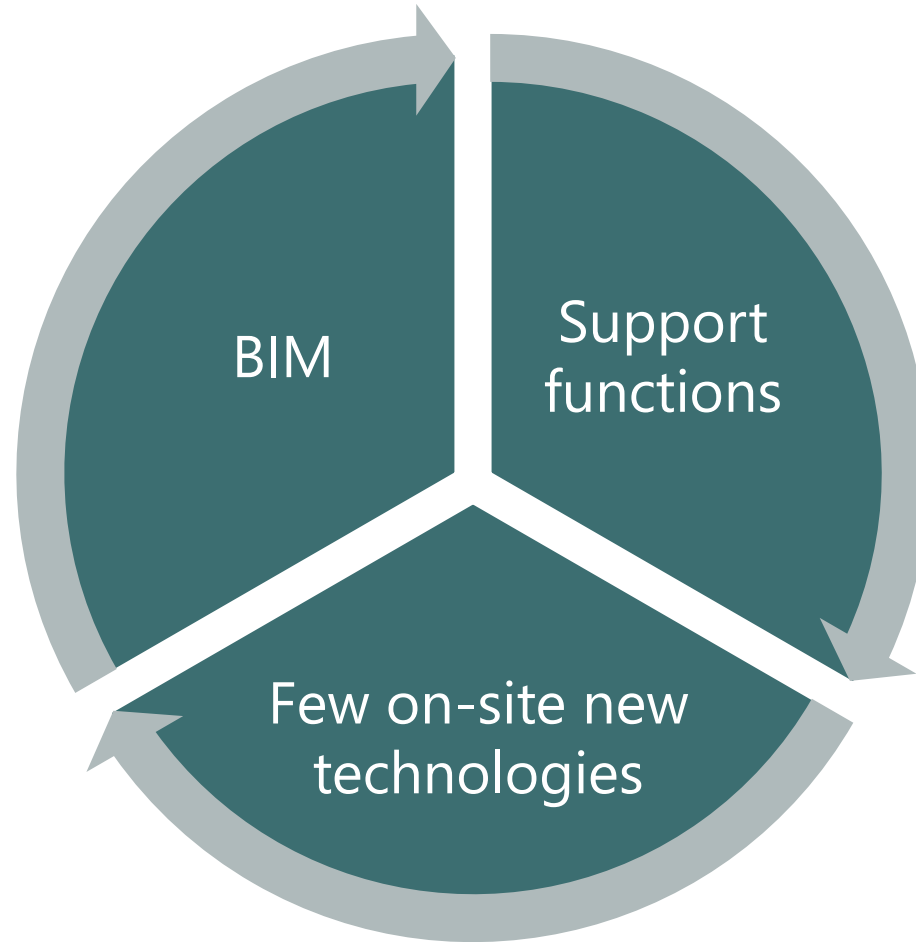
Trust and
good social
climate

150 employees
/ 45 M euros
Turn over
(2019)

A genuine skills
development
approach

3

BuildAll vs Digitalisation ?

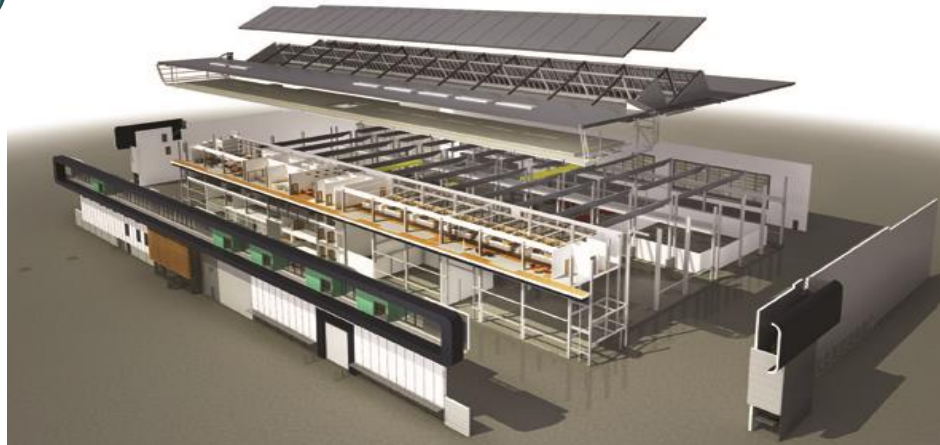


3

BIM implementation in BuildAll

Still an ongoing process

Embedded in a global quality approach



BIM seen as a success factor by all stakeholders interviewed

4

Resources used in the BIM implementation process

External support
(Constructys)



Recruitment and
training

5

Current limits ?

Still emerging
practices

BIM at the workplace ?



A global BIM process
?

What about social dialogue
and BIM ?

Thank you and
Special thanks
to Constructys

!